

# R-F-M

## THE MIDLANDS MART

— RUGBYFARMERSMART.COM —

The Charolais Pavilion, Avenue M, Stoneleigh Park,  
Kenilworth, Warwickshire CV8 2RG  
02476 697731 | [www.rugbyfarmersmart.com](http://www.rugbyfarmersmart.com) | 43/139/8013  
Office hours: Monday to Friday - 9.00am - 5.00pm  
Opening Time: Gates open at 5.30am until further notice

## MARKET REPORT FOR MONDAY 4TH DECEMBER 2023

### MARKET AT A GLANCE

Prime Steers to 338p/kg & £2292

Prime Heifers to 349p/kg & £2488

Prime Bulls to 254p/kg & £2073

Cows to 170p/kg & £1182

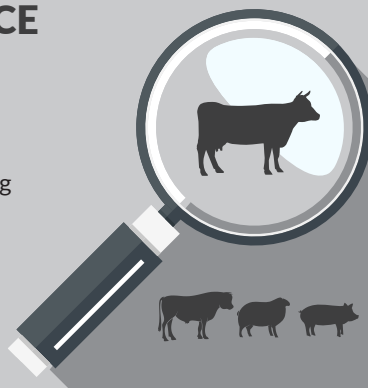
Prime Lamb SQQ 271p/kg (1276 Avg

£120)

Prime Lambs to 333p/kg & £160

Ewes to £148 (696 Avg £91)

Calves to £290 (37)



THURSDAY 14TH DECEMBER  
SALE OF STORE CATTLE & STORE LAMBS

Catalogues & Entry Forms available by post, email or on the website  
[www.rugbyfarmersmart.com](http://www.rugbyfarmersmart.com) | [admin@rugbyfarmersmart.com](mailto:admin@rugbyfarmersmart.com)

## CATTLE: 134 FORWARD



Steers: 20  
Heifers: 52  
Bulls: 3  
Cows: 22

Some smashing runs of Cattle today,

Top in the Steers was Nigel & Simon Johnson with a superb Limousin at 338ppk and another from the same stable at 325ppk. Our very own Pete Jarrom had a run of Steers at 325, 320 & 312ppk

In the lump again this went to Nigel & Simon topping at £2292

In the Heifers it was RF & JA Nichols with a Limousin x at 349ppk & 339pp. Again the Johnson Family saw 331 & 319ppk

In the lump RF & JA Nichols saw £2488 & £2429

Cows topped today with RF Leach in the lump and MW Warner ppk

***More Cattle needed each week to fulfil demand***

***Auctioneer: Emma Coupland:***

## COMMISSIONS

Following our annual review we have a tiny increase in prices

Fat Cattle £39

Over 2K £49

Store Cattle

£12 min 3.5% standard, Max £37

Breeding Sheep

4.2% plus redeemable penning deposit £5

MV RAMS

Same penning charge £5, minimum sale price £250

Commercial Rams 5% plus penning deposit £5 minimum sale price £200

Fat Lambs

3.6%

**PLEASE COULD ALL VENDORS BOOK IN STOCK,  
EITHER BY A QUICK CALL, TEXT OR EMAIL THANK YOU!**

**Office: 02476697731 | Email: [admin@rugbyfarmersmart.com](mailto:admin@rugbyfarmersmart.com) | Tom: 07774723758**

## STEERS & BULLS

Top prices per Head				FA
Limousin	678kg	£2292	NAS Johnson	Y
Simmental	726kg	£2171	RW & HER Trivett	Y
Limousin	664kg	£2158	NAS Johnson	Y
Limousin x	694kg	£2151	RW & HER Trivett	Y
Limousin	690kg	£2125	R Ellis & Son	Y

Top prices per Kilo				
Limousin	678kg	338ppk	NAS Johnson	Y
Limousin x	602kg	325ppk	PM Jarrom	Y
Limousin	664kg	325ppk	NAS Johnson	Y
Limousin x	596kg	320ppk	PM Jarrom	
Limousin	640kg	312ppk	PM Jarrom	Y

## HEIFERS

Top prices per head				FA
British Blue	734kg	£2488	RF & JA Nichols	Y
Limousin x	696kg	£2429	RF & JA Nichols	Y
Limousin x	728kg	£2177	DTP & PA Walters	Y
Limousin x	710kg	£2151	DTP & PA Walters	Y
Limousin x	634kg	£2130	RW & HER Trivett	Y
Top prices per kilo				
Limousin x	488kg	349ppk	RF & JA Nichols	Y
Limousin x	506kg	340ppk	J Collins	Y
British Blue	734kg	339ppk	RF & JA Nichols	Y
Limousin x	634kg	336ppk	RW & HER Trivett	Y
Limousin x	586kg	333ppk	R Ellis & Son	

## Len Eadon 1999-2022 Tribute page

<https://leneadon.muchloved.com/?fbclid=IwAR1QM9qsvxqscmyehDUuwJvjrbR4KICliDqyezwbDyBEAsDaB164bZn50g4>

## COWS

Top prices per head Cows				FA
British Shorthorn	712kg	£1182	R F Leach	Y
British Shorthorn	764kg	£1169	N Hague & Sons Ltd	Y
British Shorthorn	740kg	£1162	R F Leach	Y
Top prices per kilo				
Angus	574kg	170ppk	M W Warner	Y
British Shorthorn	712kg	166ppk	R F Leach	Y
British Shorthorn	726kg	159ppk	N Hague & Sons	Y

## PRIME LAMBS: FORWARD SQQ 271 P/KG AVG £120



Less about today as the awful weekend of weather took its toll. A yarding that lacked quality for the most part with a fair few just rushed off the land before they floated away. A swift deadweight decrease in price and a report of very slow sales by buyers but despite this a smart trade to level at an SQQ of 270p/kg with volume Exporters keen for numbers today. Hopefully a glimmer of hope for the Festive Seasons trade. Better end lambs in good demand for Butchers and selling to 333p/kg at 36kg from R Richins with PJ East 319p/kg and our very own Woody 302p/kg at 43kg for grass fed Beltex. No real fed lambs on show today and as a whole lacking the backs that we saw in last weeks yarding. Meat seeing Export weights 275 to 290p/kg subject to confirmation. Leaner first cross export weights trading 260p/kg plus in general with meat regularly 270-275p/kg. Weighted lambs still easiest sold seeing 48kg to 300p/kg for M J Woodward and P J East 298p/kg at 48kg and 46kg. BJ Wain, Alice Wain, Emily Wain and Jack Wain all 51.5kg at 291p/kg. Heavies in general 255p/kg to 265p/kg.

An all in avg of £120 for a yarding with a lot of lightweight Lambs on parade. In the gross, Export lambs to £130 for 43kg from M Woodward and £130 at 44kg from Humphrey Livestock. B C Burton 45kg to £128 and P J East £126.50. Weight pays and those with weight taking advantage. A top of £160 for 60kg from J & R Lowe with £154 at 58kg from Messrs Hollands Messrs Lowe £153 and £152 at 54.5kg. Messrs Wain, Nichols, Woodward, Mills & Wilson all then taking £150!!

Reports of Seasonal Australian meat hitting Smithfield this week does not provide comforting thoughts. We hope our Consumers here and Abroad will support British Lamb.

Lambs must be presented clean and dry. Due to recent weather conditions all lambs now need belying and crutching prior to sale

*Auctioneer: Thomas Wrench*

# DIRTY CRUTCHES & BELLIES ARE NOT ALLOWED OVER THE WEIGHBRIDGE

## PRIME LAMBS SQQ 271 p/kg

### Per Kilo **under 45.5kg**

Beltex	36.00kg	333ppk	R Richins
Beltex	37.00kg	319ppk	P J East
Beltex	43.00kg	302ppk	MJ Woodward
Beltex	40.00kg	300ppk	P J East
Beltex	39.00kg	295ppk	R Richins

### Per HEAD

Beltex	4300kg	£130.00	M J Woodward
Beltex	44.50kg	£130.00	Humphrey Livestock
Texel	45.00kg	£128.00	B C Burton
Beltex	45.00kg	£126.50	P J East
Texel	43.50kg	£126.00	Humphrey Livestock

### Per Kilo **over 45.5kg**

Beltex	45.00kg	300ppk	MJ Woodward
Beltex	48.00kg	298ppk	PJ East
Beltex	46.00kg	296ppk	P J East
Texel	51.50kg	291ppk	BJ & IS Wain
Texel	51.50kg	291ppk	A Wain

### Per HEAD

Char	60.00kg	£160.00	J & R Lowe
Texel	58.00kg	£154.00	GJ & W Hollands
Char	54.50kg	£153.00	J & R Lowe
Texel	57.00kg	£152.00	J & R Lowe
Texel	51.50kg	£150.00	BJ & IS Wain

**\*\*FAT CATTLE TIMINGS\*\***  
**COWS 8:30AM**  
**PRIME CATTLE 9AM**

Sunday lairage is now open from 9am-3:00pm  
 Gates close 3:00pm **STRICTLY.**

## CULL EWES: 696 FORWARD



Ewes;

Well over 700 again and trade still hard graft. More men wanting to sell than buy. Mules and Heavies a touch dearer on the week for a yard short of weight. Top £148 for J Mills & Son with T G White £145 both for Charolais. White Faces generally £125 to £140. Suffolks to £142 for Grove Farm Lamb Ltd and £132 for AC & RCW Turney. Suffolks generally £115 - £120. Mules to £110 for A Mitchell the same taking £109. Mules with weight generally £90- £98. Ewes a hard slog and very few Abbatoirs seemingly processing Ewes at the current time.

**PLEASE SEE THE WELFARE STATEMENT BELOW REGARDING THE CULL EWES**

*Auctioneer: Thomas Wrench*

### EWES

Texel	£148	J Mills & Son	Ram	£142	J Herod
Char	£145	T G White	Continental	£142	P J East
Suffolk	£142	Grove	Texel	£132	JK Smith & Sons

## WELFARE STATEMENT

Following a meeting with Warwickshire Trading Standards & the FSA on Monday we have been asked to highlight the Welfare Issues being reported from the Abbatoirs regarding Cull Ewes. These mainly relate to MASTITIS & LAMENESS. Condition Score i.e being very thin.

Please remember that an animal must be fit for the intended journey, it should not be ill, injured or severely lame ie. must be full weight bearing.

These sheep are being rejected at abattoirs around the Country

## STORE LAMBS: 289 FORWARD



Being A very wet and horrible day we still had a few more Lambs forward than anticipated but trade remains strong for the short term Lambs, smaller Lambs a little easier and today we had pen after pen of Tup Lambs which reflected on trade

The best Lambs topped at £114.50 for strong Suffolks

We had good runs today

Next sale will be on Monday 11th and a Special Sale 14th December

*Auctioneer: Tim Webster*



### AUTO GATES LTD

Bridge Farm, Holt Lane, Ashby Magna, LE17 5NJ

Trevor 07498993897/01455 202791

Email: [tjautogate@gmail.com](mailto:tjautogate@gmail.com)

Fitted to new or existing gates, wood or steel automated.

Sliding, swinging or cantilever.

### FOR SALE

"FOR SALE-BORDER COLLIE  
PUPPIES.

Both working parents registered  
Tel Graeme 07891 677468"

## CALVES



Baby Calves : 18 Forward

A few decent sorts about this morning and a good crowd present

Messrs EB & BM Sutton topping today with a Simmental Bull Calf realising £290, and 2 others at £260 & £270

We also had a classy Limousin Heifer from Phil Dyson at £270

A fair run of 10 Calves from Long Partners mainly Named Sire Angus, who has also booked in a further 10 for the next sale on the 18th December

Next sale will be the last sale of the year and will be a Show & Sale Week

Simmental Bulls.	£260 to £290
Limousin Hfrs.	to £270
British Blue Bulls.	£165 to £190
British Blue Hfrs.	£120 to £245
Hereford Hfrs.	to £150
Angus Bulls.	to £100
Angus Hfrs.	£95 to £120
Holstein Bulls.	to £20

Weaned Calves : 19 Forward

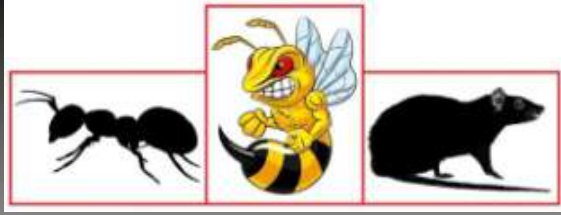
Good entry of mainly Angus Steers & Heifers from Paul Mardell and Will Warner 8 - 13mo

Plenty of buyers attended and cattle making Premium prices and topped at £570 for 8-10mo Angus Heifers from Paul Mardell and bought by Messrs WS Gabb Ltd

There will be a few more Weaned to sell on the 18th December

***Auctioneer: Tim Webster***





# RDB Pest Control

Reliable | Trustworthy | Fast | Effective  
Competitive Prices

**Ryan Brunt**

**07922 091 459**

**[www.rdbpestcontrol.co.uk](http://www.rdbpestcontrol.co.uk)**

## **Why You Should Choose Us**

- ✓ Cater for Red Tractor and Farm Assurance Schemes
- ✓ Wide ranging experience on Farms with existing agricultural customers
- ✓ Member of Warwickshire Young Farmers
- ✓ Fully qualified - Level 2 RSPH in Pest Control
- ✓ Trustworthy and security vetted
- ✓ Prompt, reliable fast response

## **A selection of sites where I have experience:**

Police Sites • Local Airport • Farms • Warehouses • Offices  
• Industrial Estates • Food Premises • Private Houses  
Country Estates • Building Sites • Local Councils • Schools •  
Day Nurseries • Care Homes



To Let  
5 Bedroom Farm House  
Northamptonshire. Close to M1 J16  
Further details contact  
Ann Wilson 07710752260  
annwilson70@googlemail.com

## **HARRIS & CLARKE**

### **CHARTERED ACCOUNTANTS**

***...Specialising In Agriculture...***

**Our team of staff has many years of  
experience in dealing with the accountancy  
and taxation affairs of farmers, landowners  
and agricultural contractors**

**For further information or a free no  
obligation meeting please contact**

**John Harris**

7 Billing Road, Northampton, NN1 5AN  
Telephone 01604 622274  
[www.harrisandclarke.co.uk](http://www.harrisandclarke.co.uk)



# Farm Diversification

howkinsandharrison.co.uk

HOWKINS &  
HARRISON

Generating sufficient financial income and return on investment from farming activities such as agricultural production is becoming increasingly challenging as we navigate the phasing out of BPS and the integration of major new legislation, with a focus on mitigating climate change & driving environmental benefit. Diversification is becoming a vital part of the plan.

Gaining the input of an independent specialist with their fresh perspective and new options that perhaps challenge the traditions of multiple generations is invaluable. Being asked the difficult questions that you are reluctant to face, vital.

We are here to support clients – existing and new to us, through the process of farm diversification and business change, steering you through funding options and beyond to provide a robust business for the future generations.

We are here to help. Contact our team today to consider how you will replace your BPS income:

- Ashby ashby@howkinsandharrison.co.uk | 01530 877977
- Atherstone athrural@howkinsandharrison.co.uk | 01827 721380
- Rugby rugrural@howkinsandharrison.co.uk | 01788 564680
- Towcester towrural@howkinsandharrison.co.uk | 01327 397979

SALES / LETTINGS / COMMERCIAL / FARM & RURAL  
PLANNING & DEVELOPMENT / AUCTIONS



Berryfields Farm

## BERRYSTOCK FEEDS



**PROVIDING CATTLE  
AND SHEEP FEEDS FOR  
THE MODERN MARKET**



### Do You Want?

- HIGH PERFORMANCE
- COST EFFECTIVE
- FULLY ASSURED
- COMPLETE FEEDS
- INTEGRATED FEEDING SYSTEMS

Then contact **BERRYSTOCK FEEDS:**

Tel: 01788 890320 E-Mail: [admin@berryfieldsfarm.co.uk](mailto:admin@berryfieldsfarm.co.uk)

Web: [www.berrystockfeeds.co.uk](http://www.berrystockfeeds.co.uk)

UFAS 350

**DO IT THE BERRYSTOCK WAY**

## T.A.R HIRE

### FOR HIRE:

10 & 14 TON REAR MUCK  
SPREADERS

12 TON TRAILERS WITH  
SILAGE SIDES

ROAD SWEEPER

FLAT TRAILERS

GRASS TOPPERS

CONTRACT MUCK

SPREADING SERVICES

### CONTACT:

DAVENTRY (ROB) - 07801791212

HINCKLEY (ALAN) - 07802951179





# Farm insurance, the way it should be

We're a family-run business and pride ourselves on forging long term relationships with our farming and agricultural clients. Covering the Midlands, South West and South East, we deliver an extensive range of farm, agri business and equine policies tailored to you.

Farm & Equine **01865 290915**

General **01865 844998**

 Follow us @County\_Farm

[www.county-insurance.co.uk/farms](http://www.county-insurance.co.uk/farms)



Independent Insurance Brokers County Insurance Services Limited. Address and Registered Office: County House, Glyme Court, Langford Lane, Kidlington, Oxon OX5 1LQ. Authorised and regulated by the Financial Conduct Authority (FCA) (FRN: 597267). Company registered in England No. 08411634

# WE COVER SMALL FARMS, LARGE FARMS AND EVERYTHING IN BETWEEN



From sheep farmers to arable farmers.  
Flower growers to poultry farmers.

NFU Mutual is proud to insure over 75% of UK farms with our Farm Select insurance. But we want more farms to benefit from great cover and local service. NFU Mutual has introduced Farm Essentials insurance – designed to meet the needs of smaller farms.

As your local agency, we are close by and can provide expert advice and hands-on support when you need it.

Call **Coventry Office** on **02476 444519**

NFU Mutual, 6 Eastwood Business Village,  
Harry Weston Road, Binley Business Park,  
Coventry, CV3 2UB



**NFU Mutual**  
FARM INSURANCE



## THE MIDLANDS MART

RUGBYFARMERSMART.COM

### THURSDAY 14TH DECEMBER SALE OF STORE CATTLE & STORE LAMBS

**Vendors who are wishing to sell stock  
please feel free to contact:**

**Tom Wrench** - 07774 723758 Market Manager & Auctioneer

**Tim Webster**- 07437 101163 Auctioneer & Fieldsman

**Emma Coupland**- 07808 271218 Fat Cattle Auctioneer

**Charlie Betteridge**- 07760266701 Fieldsman

**Nathan Shaw**-07460120293 Yard Manager

who will gladly make

**A FREE ON FARM VISIT & VALUATION**



**Follow us on social media:**

Facebook & Twitter - @RFMMidlandsMart

Instagram - rugbyfarmersmartltd

# **VET ATTESTATIONS**

## **PREPARE NOW**

Producers selling livestock for slaughter  
will require a Veterinary Attestation from  
13th December 2023



From 13th December 2023, all producers selling livestock for slaughter will require a Veterinary Attestation, or evidence of membership of a qualifying assurance scheme. Producers should prepare now for the changes. Follow the link below to our FAQs for livestock markets and producers to find out more. <https://www.laa.co.uk/news/5126/veterinary-attestations-faqs-for-livestock-markets-and-producers/>